



COMPANY PROFILE

PT. ASHA GAUTAMA INDONESIA

Company Overview

PT. AGI is Plastic Re-Pellet/Nurdles and Compound Manufacturing for Automotive and Furniture Components

Our Products:

- Any kind of Plastic Pellet/Flakes
- Palm Fiber
- Furniture
- Automotive Components



VISION

To become a leading company in plastic recycling, producing high-quality plastic pellets that support sustainable industries and promote environmental preservation

MISION

- **Deliver High-Quality Products:** Produce plastic pellets that meet industry standards to support local and international market needs.
- **Promote Sustainable Recycling:** Educate communities and business partners on the importance of responsible plastic waste management.
- **Build Strategic Partnerships:** Foster collaboration with communities, governments, and private sectors to enhance plastic waste collection and expand production capacity





Our Product

Our Product

1) POLYAMIDE / NILON



2) ACRYLONITRILE BUTADIENE STYRENE (ABS)

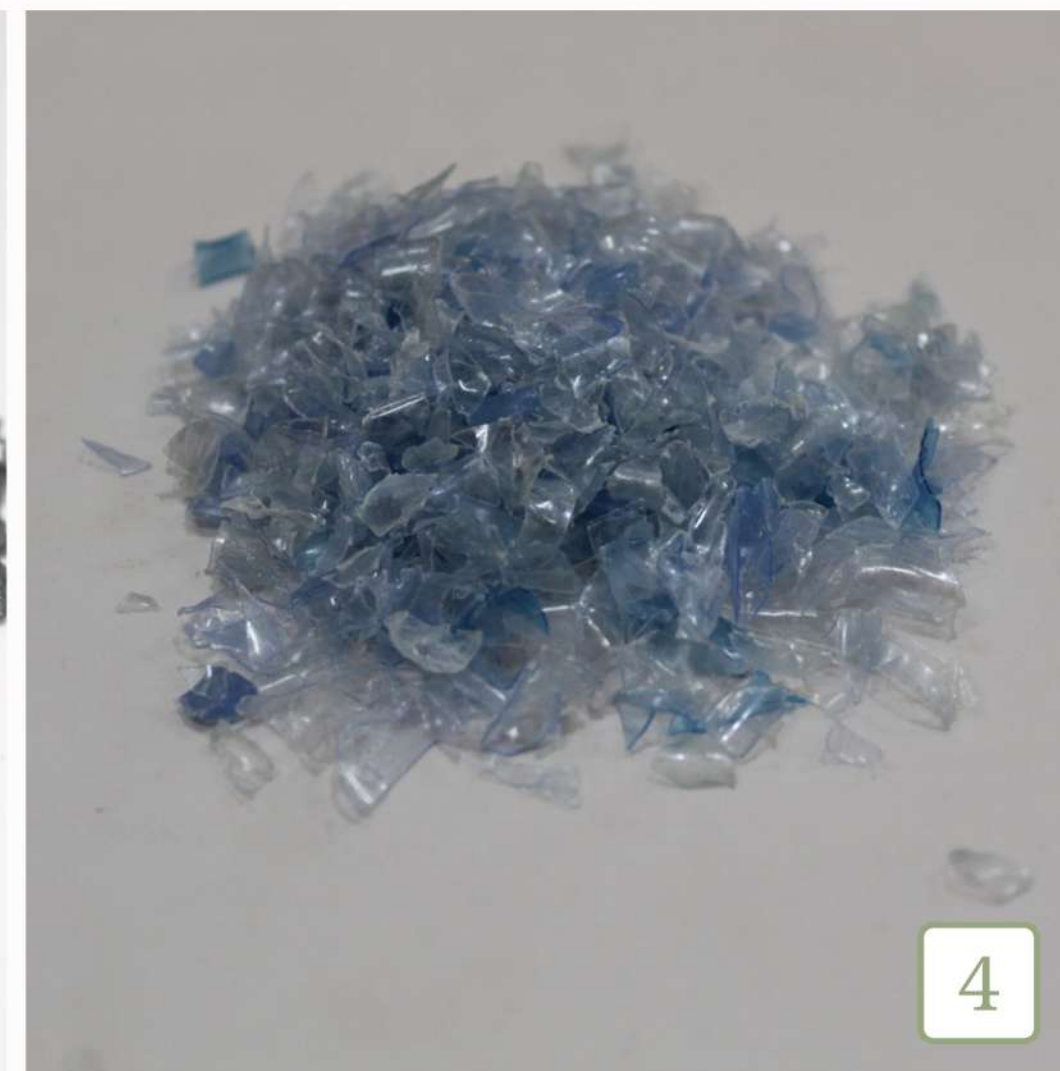


3) POLYPROPYLENE (PP)



4) POLYETHYLENE TEREPHTHALATE (PET)

Flake



5) PALM FIBER

6) POLYETHYLENE TEREPHTHALATE (PET)

Mix of talc 10%, TiO₂ 3%, Optical Brightener 0.0025

7) POLYPROPYLENE / MOUNTEA/MONTY

8) POLYETHYLENE TEREPHTHALATE (PET)

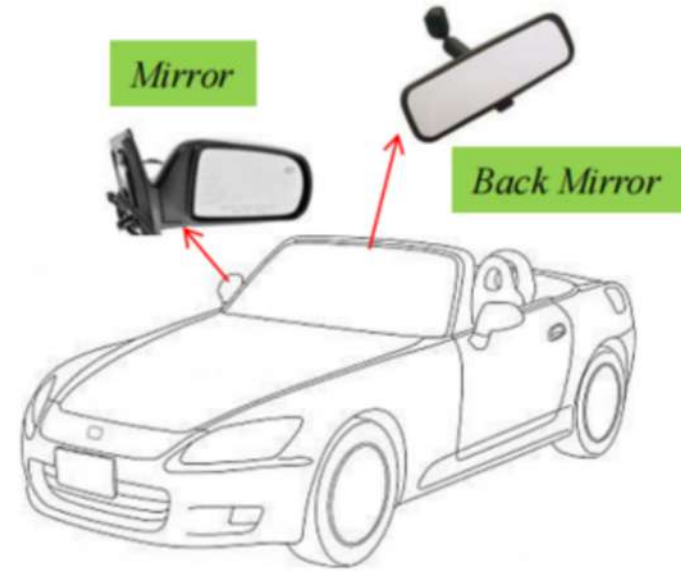
FOR MORE DETAILS / PRODUCT PLEASE CONTACT US



Furniture and Automotive Components

Automotive part

PP Materials



ABS Material



Non Automotive



Door



Roof

Our factory location In Indonesia



Our Production Facility

**Stones Material
Crusher**



General Crusher



Machines	Quantity	Capacity
Stones Material Crusher	1	300 kg/Hour
General Crusher	4	200 kg/Hour

Extruder



Machine Specification :

Type/Year : Series single
Screw / 2015
Maker : Nanjing Dalite
Machinery
Capacity : 225 kg/hour

Mixer



Machines	Quantity	Capacity
Mixer	2	200-1000 kg/hour

Our Production Facility

Compounder [2 unit]



Machine Specification :

*Type/Year : Series Twin
Screw / 2018
Maker : Zhangjiagang
Machinery
Capacity : 275 kg/hour*

Machine Specification :

*Type/Year : Series Twin
Screw / 2017
Maker : Nanjing Dalite
Machinery
Capacity : 225 kg/hour*



Quality Laboratory Equipment



Testing Machine	Quantity	Testing Method
<i>Melt Flow Rate</i>	<i>1</i>	<i>ASTM D-1238</i>
<i>Izod Impact Tester</i>	<i>1</i>	<i>ASTM D256A</i>
<i>Hardness Tester</i>	<i>1</i>	<i>ASTM D-785</i>
<i>Universal Testing Machine</i>	<i>1</i>	<i>ASTM D-638</i>

Flow Process



Factory Gallery



Why Choose Us ?

At PT. Asha Gautama Indonesia, customer satisfaction is our top priority. We dedicate to build long-lasting relationships with our clients by providing exceptional products and outstanding service.

**Let us know, if you
have any question!**

CONTACT INFORMATION



+6281257301540



ashaplasticsid.com



putra@ashaplasticsid.com

